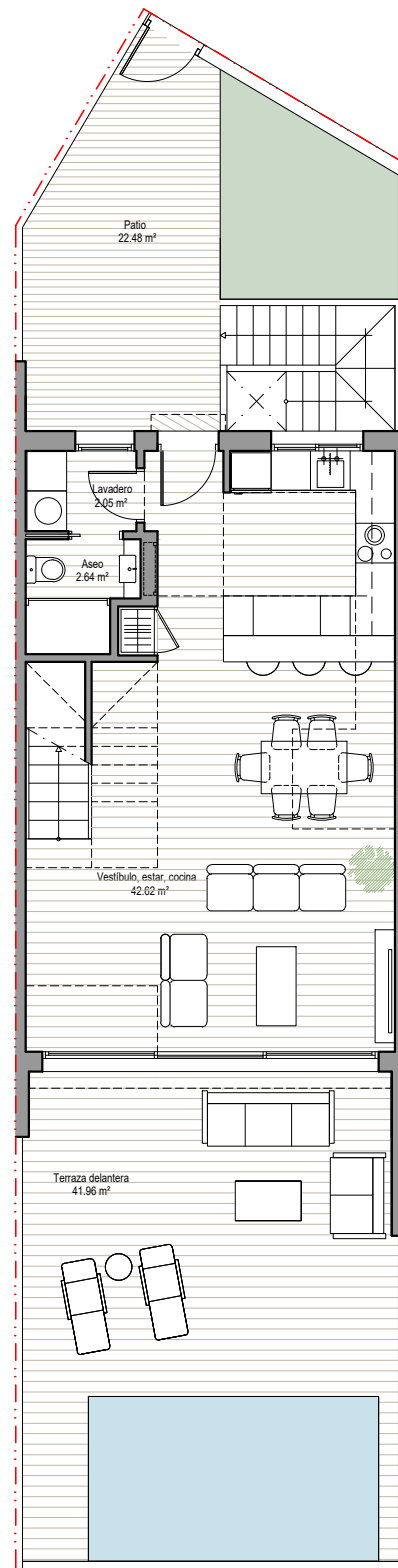
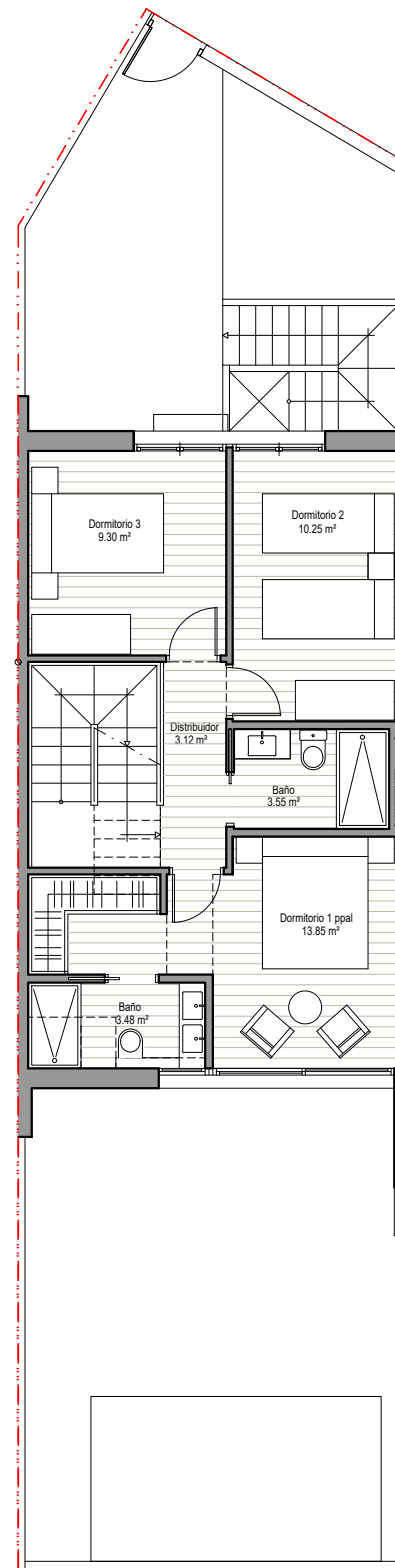


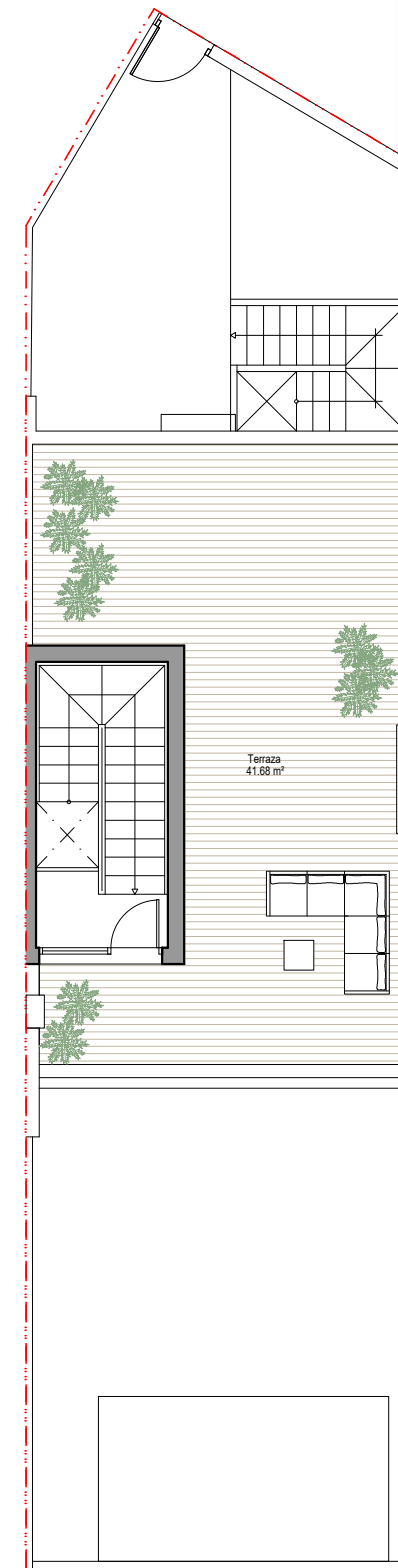
PLANTA SÓTANO



PLANTA BAJA



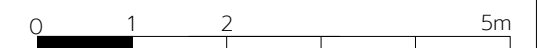
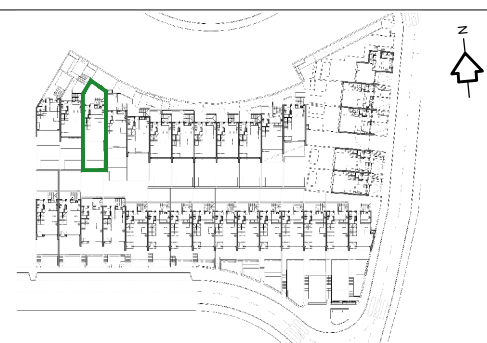
PLANTA ALTA



PLANTA TORRE



Superficie útil vivienda.....	108,30 m2
Superficie útil terrazas.....	106,19 m2
<b>Superficie construida</b>	
<b>SÓTANO</b>	
Aparcamiento.....	34,90 m2
P.P.Z.C.....	35,11 m2
Total.....	70,01 m2
<b>PLANTA BAJA</b>	
Vivienda.....	57,95 m2
<b>PLANTA ALTA</b>	
Vivienda.....	59,37 m2
<b>PLANTA TORRE</b>	
Vivienda.....	11,13 m2
P.P.Z.C.....	0,56 m2
<b>TOTAL Sup. Construida.....</b>	<b>199,02 m2</b>



### Vivienda 3